

# Human CD20/MS4A1 Protein-Nanodisc

Cat. No. CD2-HM1N37



## Description

|                  |   |
|------------------|---|
| Source           | Recombinant Human CD20/MS4A1 Protein-Nanodisc is expressed from HEK293 with His tag at the C-terminus (FITC-equivalent protein is fused on cytoplasmic part).<br>It contains Met1-Pro297. |
| Accession        | P11836-1  |
| Molecular Weight | The protein has a predicted MW of 34.3 kDa.   |
| Endotoxin        | Less than 1 EU per µg by the LAL method.  |

## Formulation and Storage

|             |   |
|-------------|---|
| Formulation | Supplied as 0.22 µm filtered solution in PBS (pH 7.4). Notice: Not recommended for flow cytometry in mammalian cells.   |
| Storage     | Valid for 6 months from date of receipt when stored at -80°C. Recommend to aliquot the protein into smaller quantities for optimal storage. Please minimize freeze-thaw cycles. |

## Background

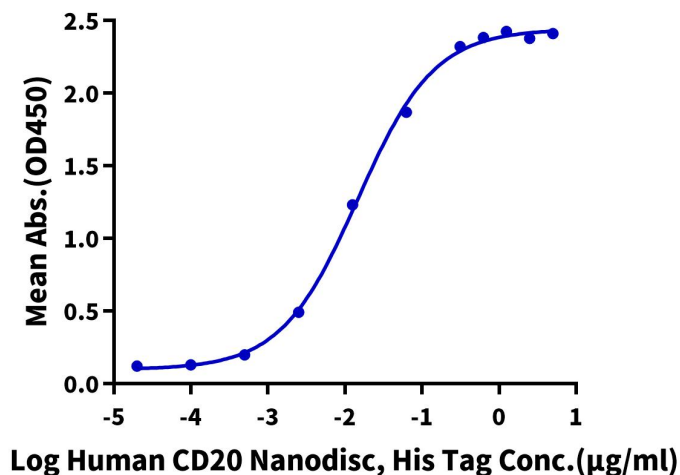
B-lymphocyte antigen CD20 or CD20 is an activated-glycosylated phosphoprotein expressed on the surface of all B-cells beginning at the pro-B phase (CD45R , CD117) and progressively increasing in concentration until maturity. CD20 is the target of the monoclonal antibodies rituximab, ocrelizumab, obinutuzumab, ofatumumab, ibritumomab tiuxetan, tositumomab, and ublituximab, which are all active agents in the treatment of all B cell lymphomas, leukemias, and B cell-mediated autoimmune diseases.

## Assay Data

### ELISA Data

#### Human CD20 Nanodisc, His Tag ELISA

0.2µg Rituximab, hFc Tag Per Well

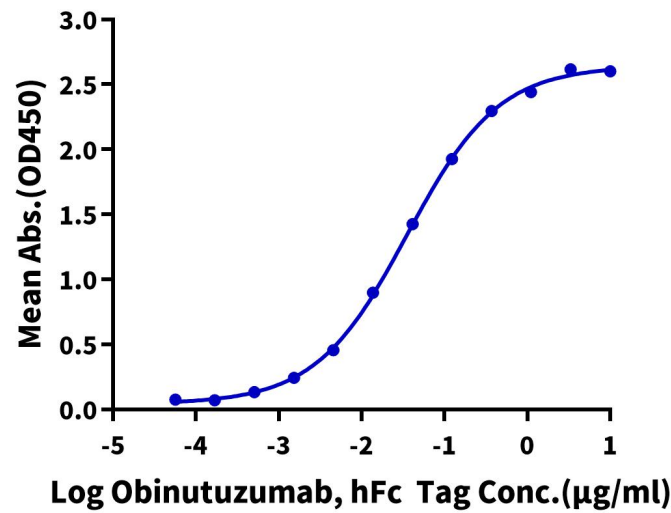


Immobilized Rituximab, hFc Tag at 2µg/ml (100µl/well) on the plate. Dose response curve for Human CD20 Nanodisc, His Tag with the EC<sub>50</sub> of 14.6ng/ml determined by ELISA (QC Test).

Assay Data

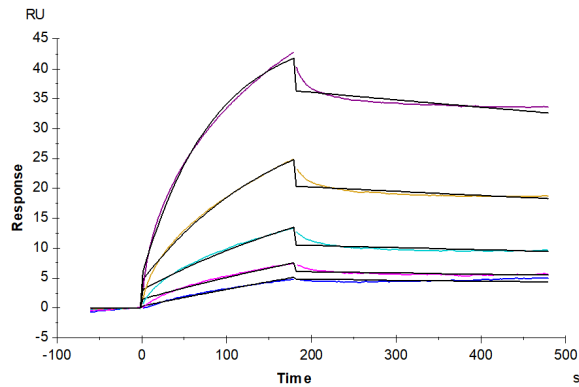
Human CD20 Nanodisc, His Tag ELISA

0.5µg Human CD20 Nanodisc, His Tag Per Well

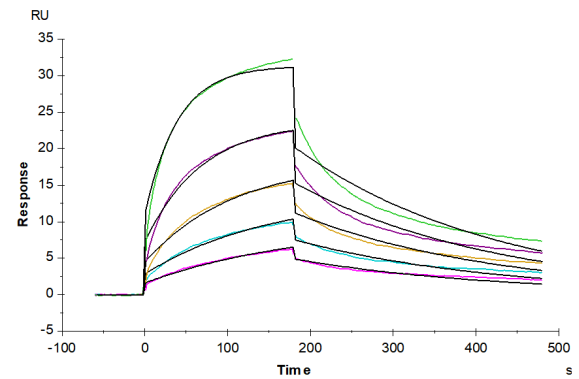


Immobilized Human CD20 Nanodisc, His Tag at 5µg/ml (100µl/well) on the plate. Dose response curve for Obinutuzumab, hFc Tag with the EC50 of 35.3ng/ml determined by ELISA.

SPR Data



Human CD20 Nanodisc, His Tag captured on CM5 Chip via anti-his antibody can bind Rituximab, hFc Tag with an affinity constant of 3.09 nM as determined in SPR assay (Biacore T200).



Human CD20 Nanodisc, His Tag captured on CM5 Chip via anti-his antibody can bind Ofatumumab, hFc Tag with an affinity constant of 153.07 nM as determined in SPR assay (Biacore T200).